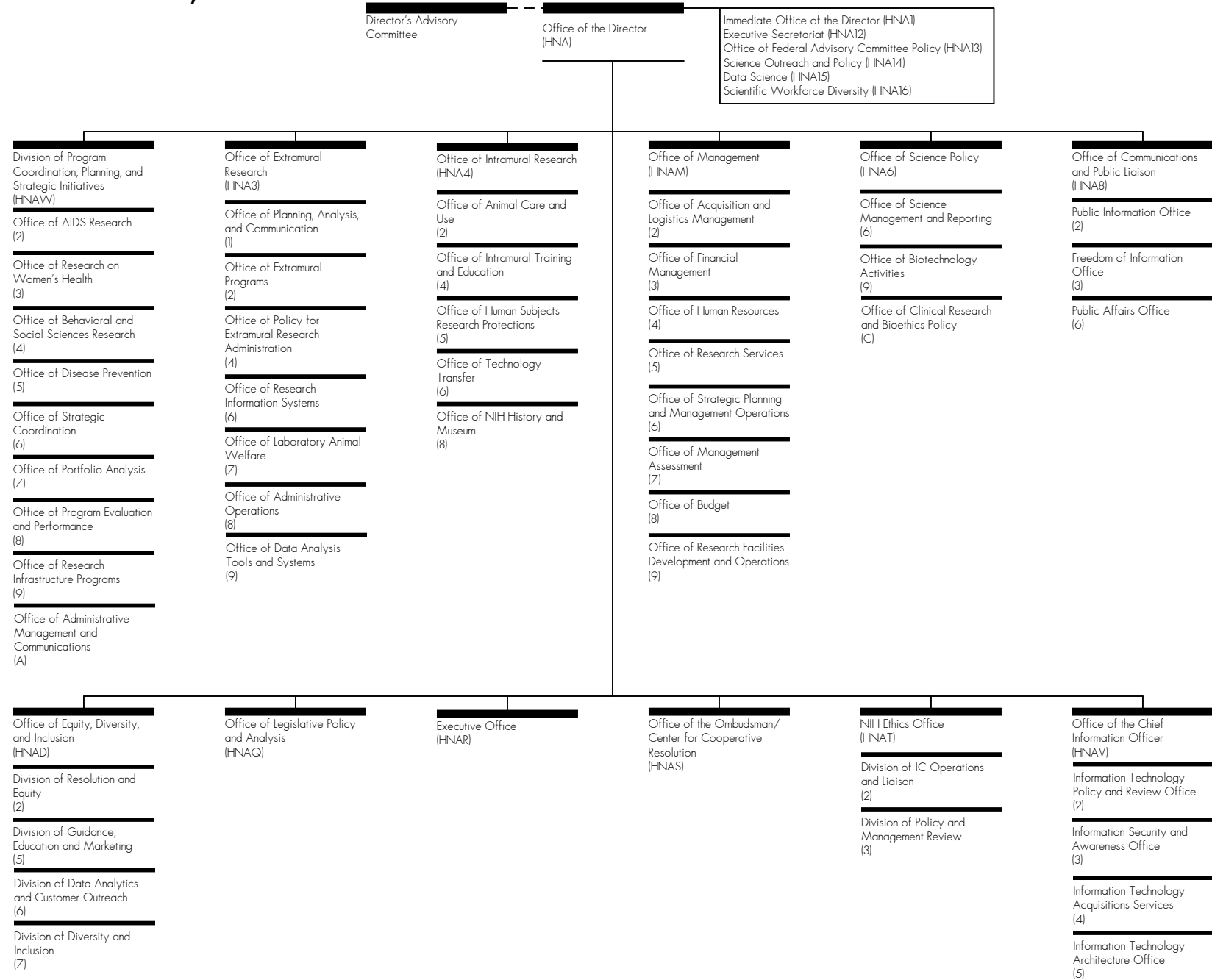
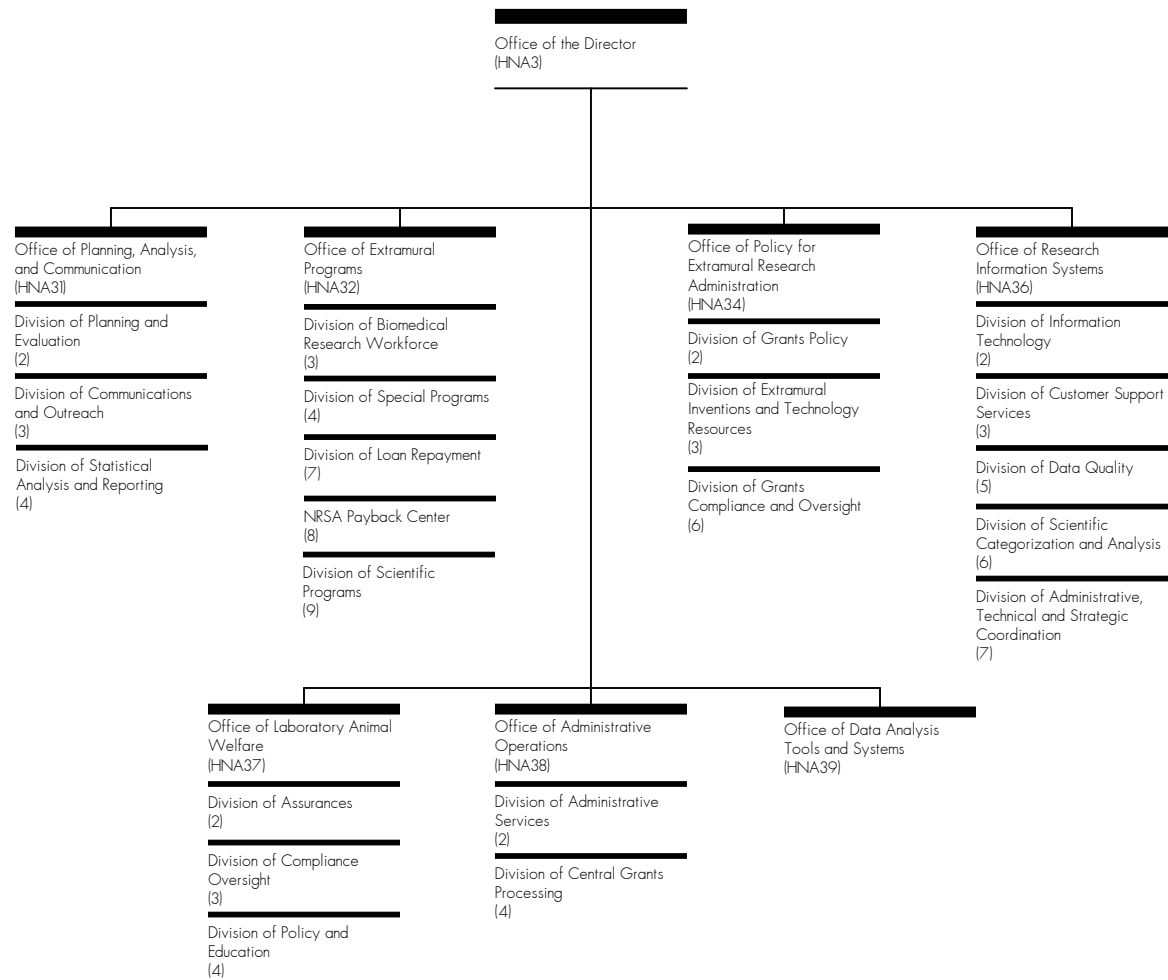


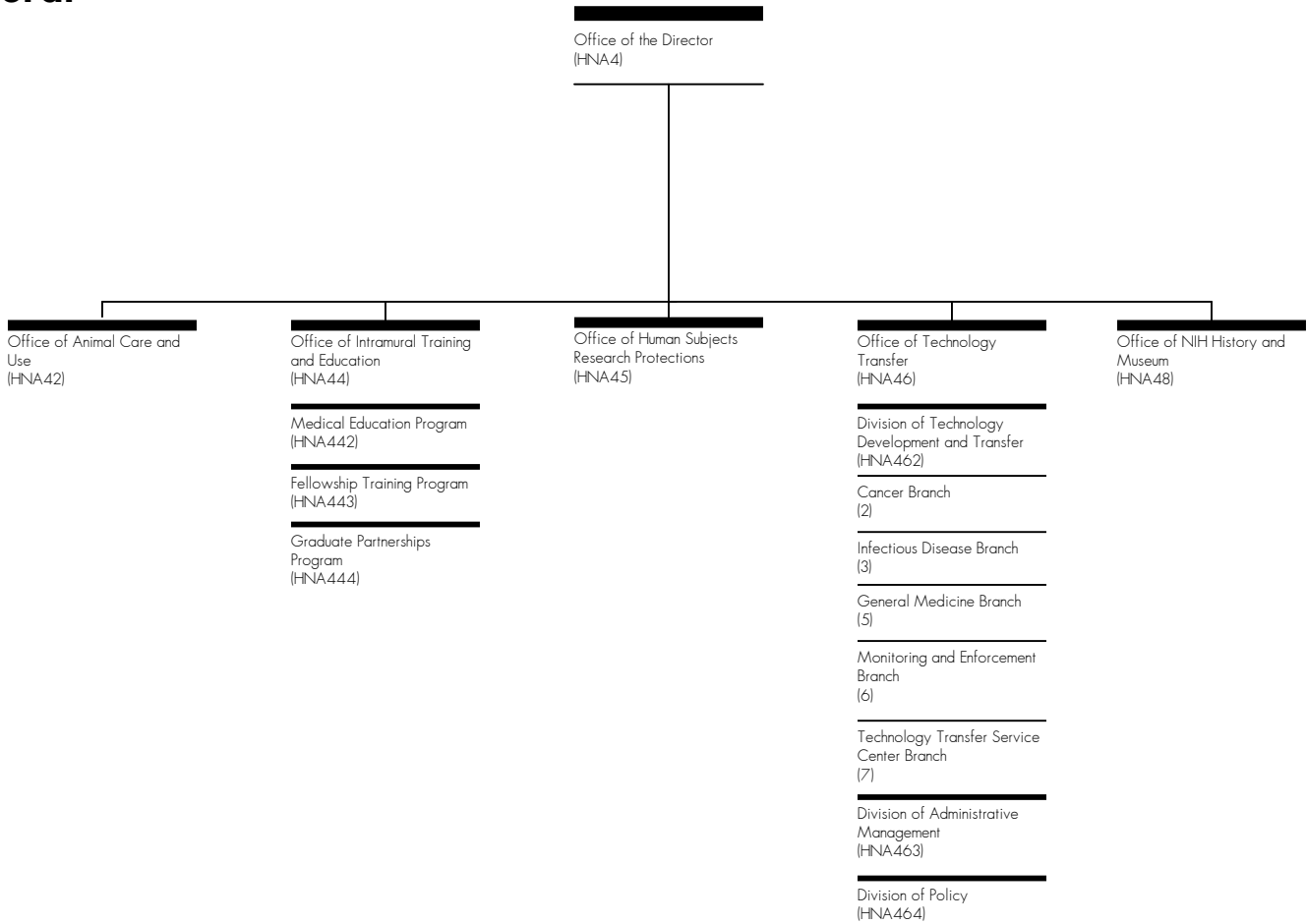
Office of the Director, NIH



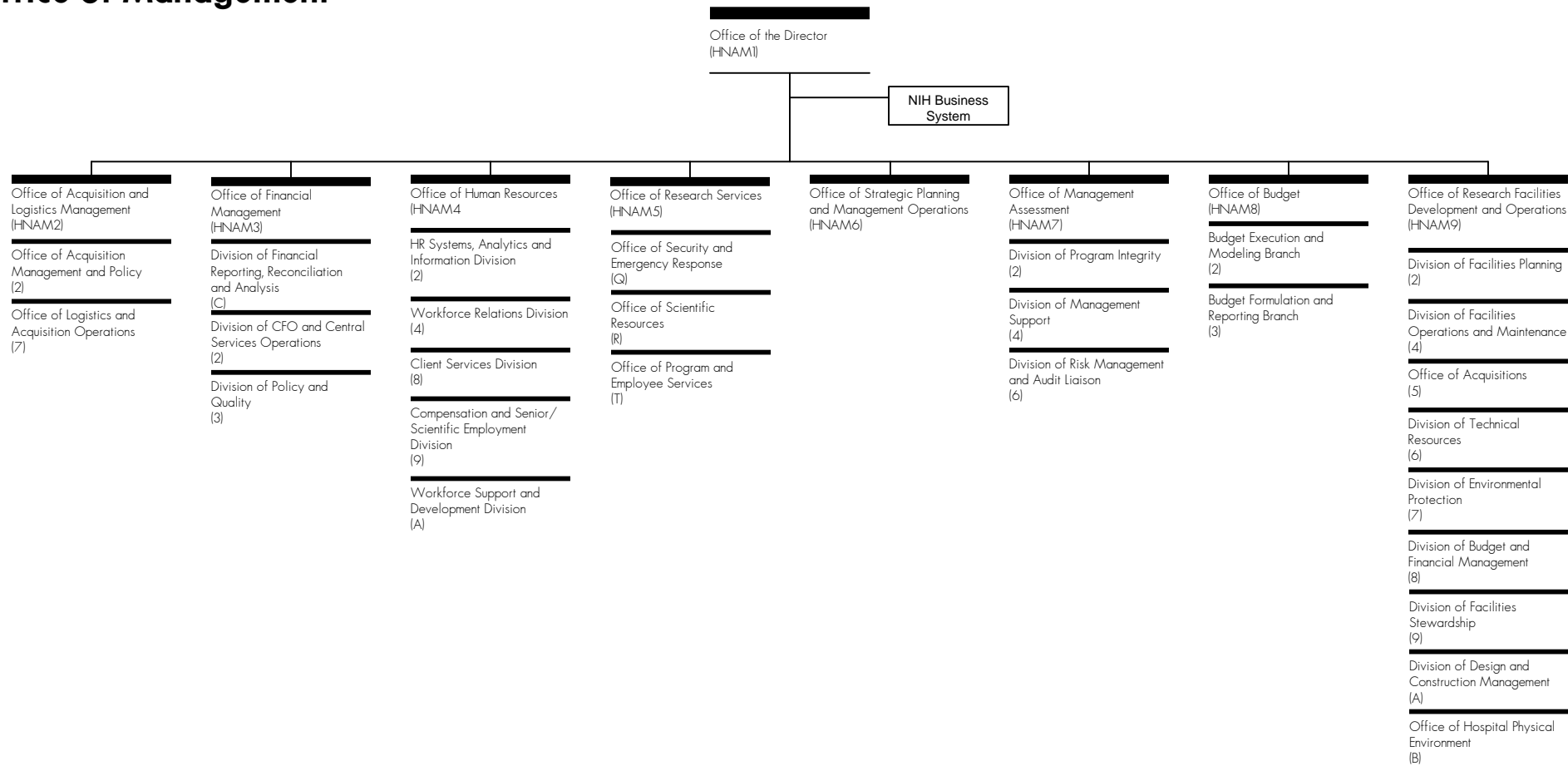
Office of Extramural Research



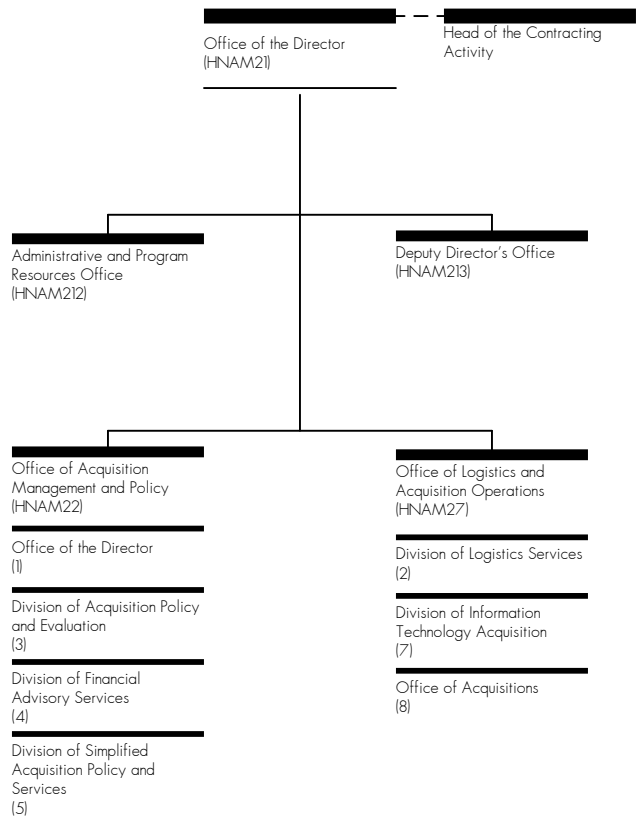
Office of Intramural Research



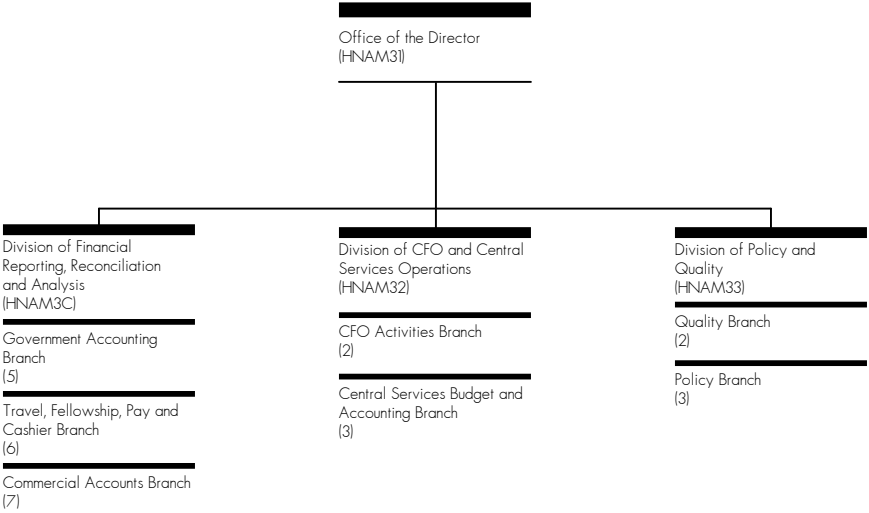
Office of Management



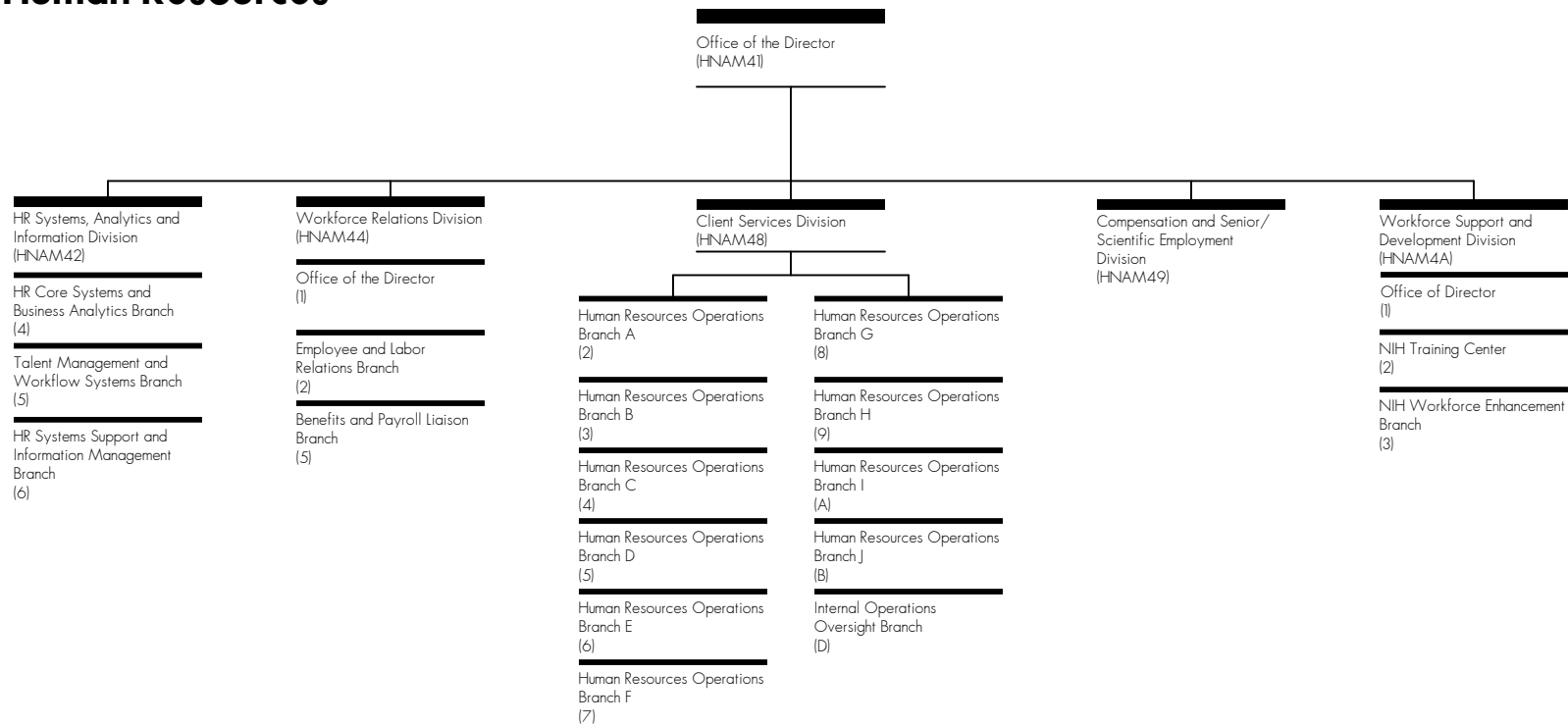
Office of Acquisition and Logistics Management



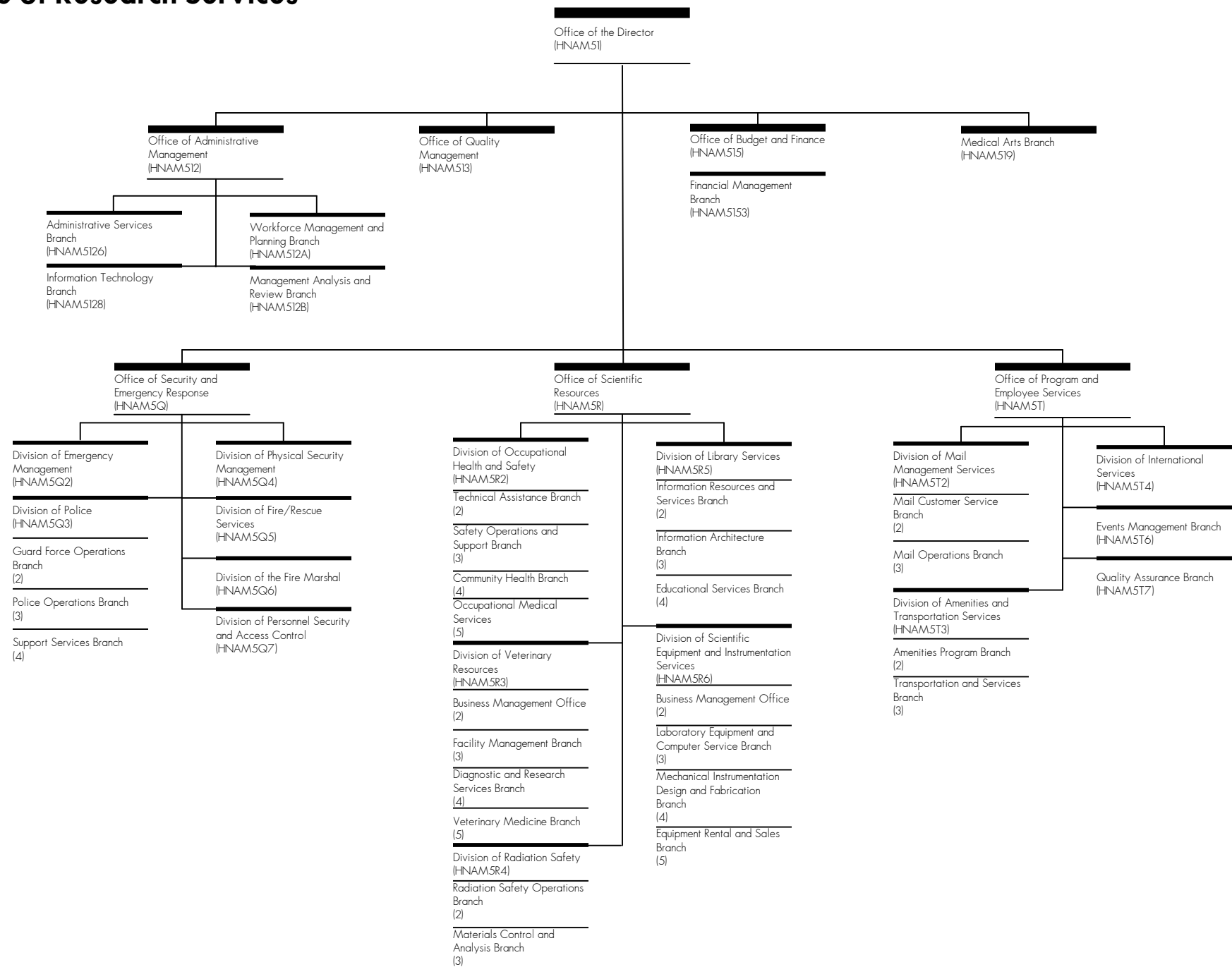
Office of Financial Management



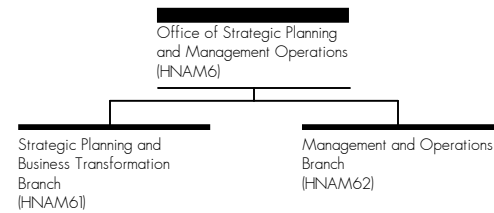
Office of Human Resources



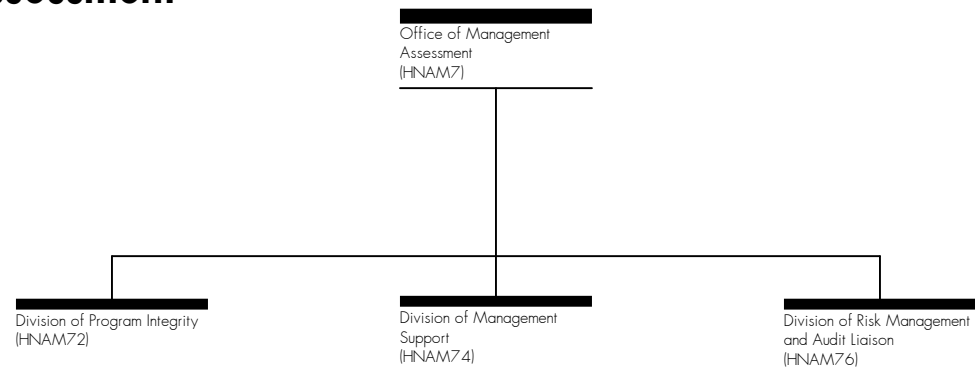
Office of Research Services



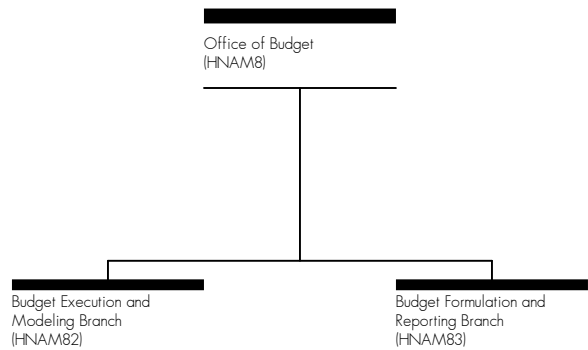
Office of Strategic Planning and Management Operations



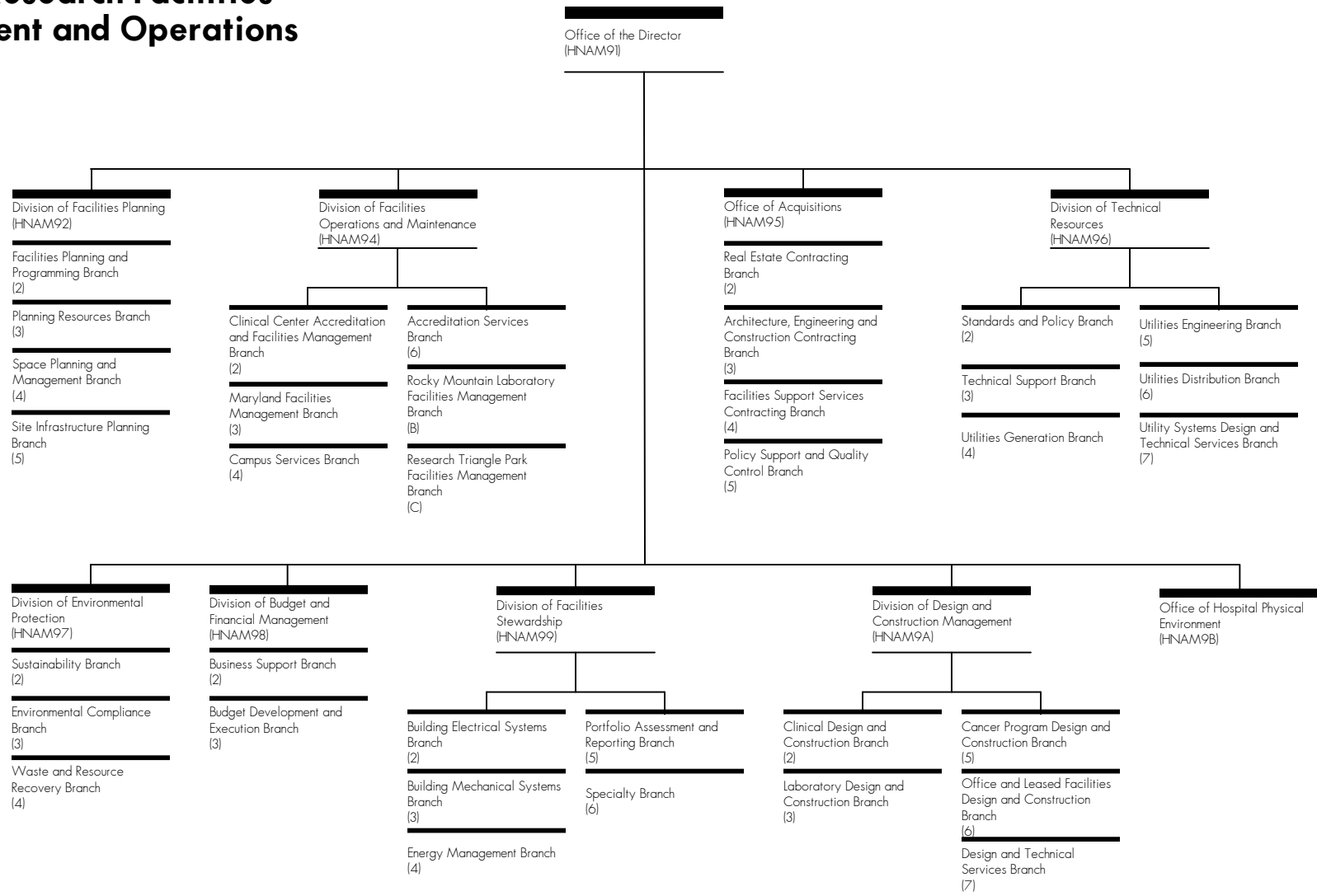
Office of Management Assessment



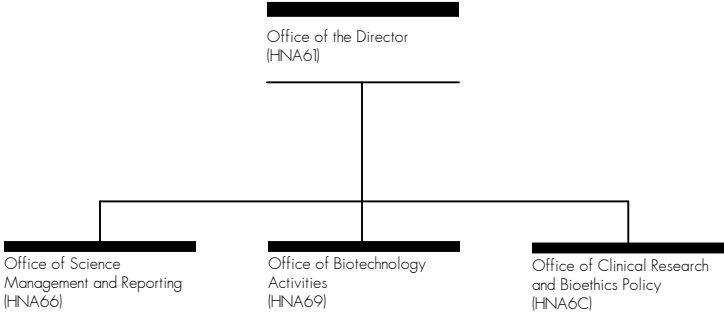
Office of Budget



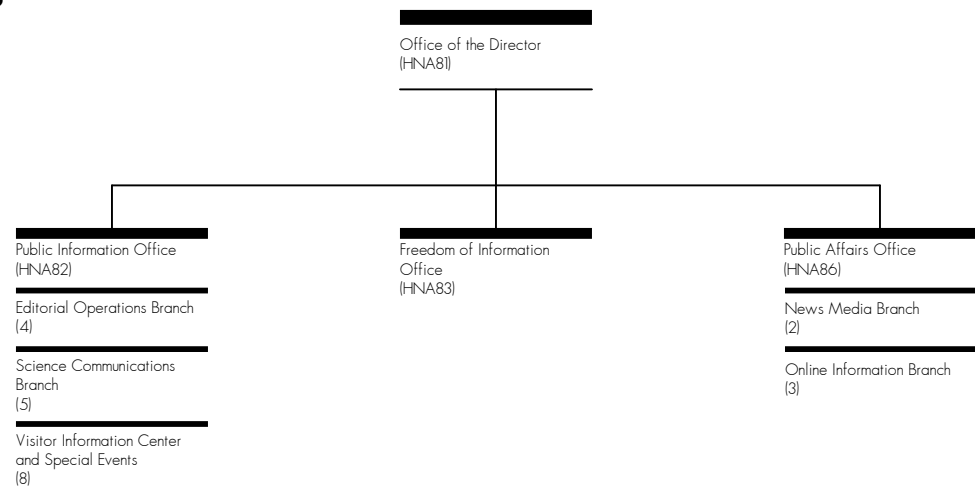
Office of Research Facilities Development and Operations



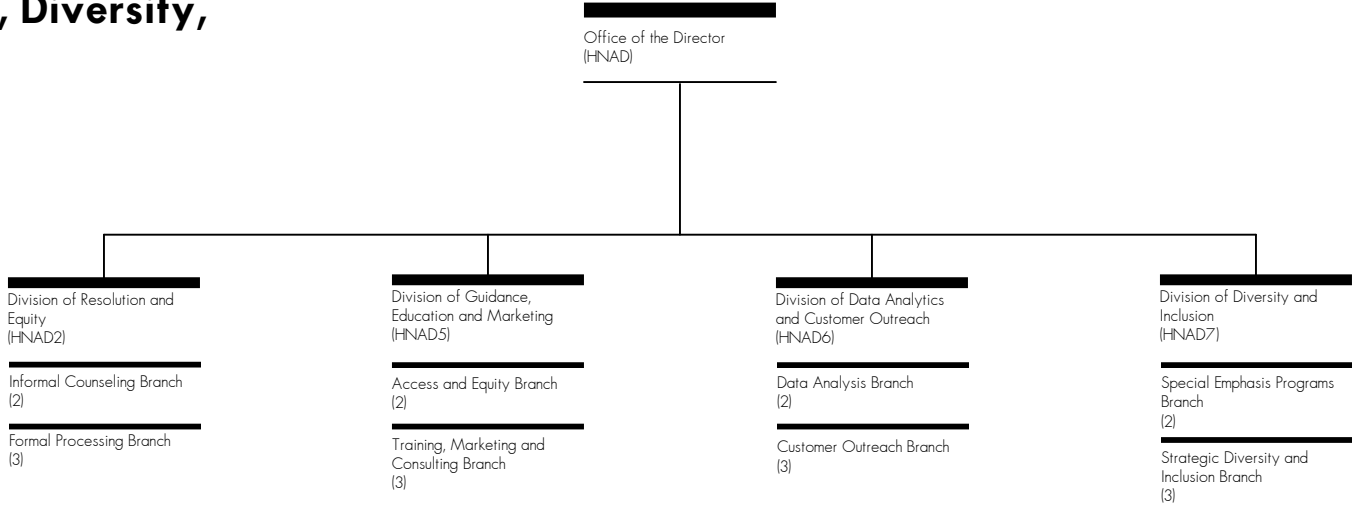
Office of Science Policy



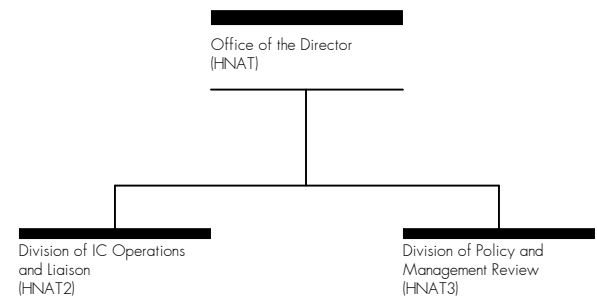
Office of Communications and Public Liaison



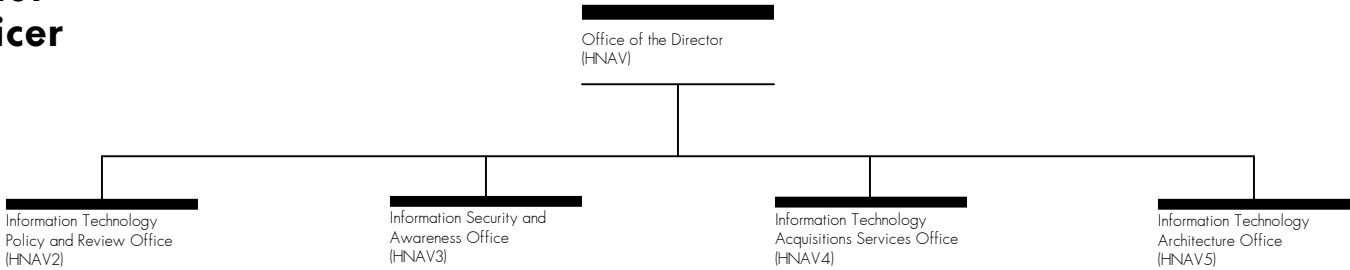
Office of Equity, Diversity, and Inclusion



NIH Ethics Office



Office of the Chief
Information Officer



Division of Program Coordination, Planning, and Strategic Initiatives

