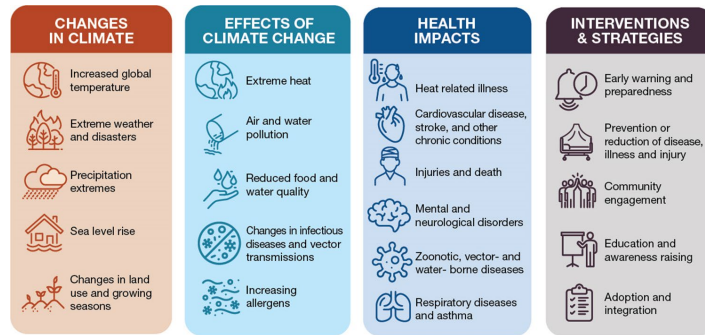




National Institutes of Health

Athawit Ketsak / Shutterstock.com

# NIH Climate and Health Scholars Program Informational Webinar



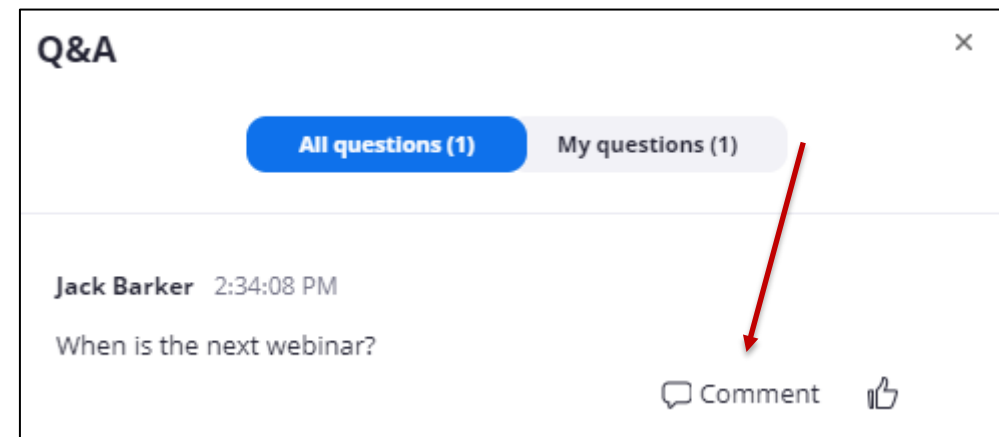
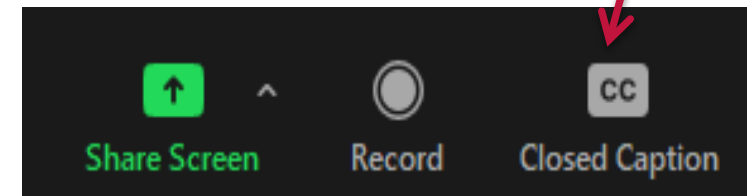
Adriana Costero - Saint Denis, NIH CH Scholars Program Director  
Aubrey Miller, NIH CCHI Steering Committee Co-Chair

July 1, 2024

## Climate and Health Scholars Information Session

### Reminders

- Today’s webinar WILL Be recorded & posted with FAQ on [NIH.gov/climateandhealth](https://NIH.gov/climateandhealth)
- Closed Captioning is available today
- Please submit questions via Q&A
  - Use ‘thumbs up’ to indicate interest in a question



## Topics to Be Covered

**Goals**

**Eligibility**

**Program Details**

**Application**

**Review**

**Questions**





## Goals of the NIH Climate and Health Scholars Program

- Bring scientists with expertise in climate and health research from outside of US Government to NIH to work on projects to support a host ICO's interests.
- Promote intellectual exchange of research findings, methods, approaches, and resources to inform NIH about current work and state of the science.
- **Build capacity and enhance climate and health understanding at NIH** across the areas of science of the Strategic Framework cog diagram.
- Support NIH institutes, centers, and offices (ICOs) in developing a stronger climate and health knowledge base.
- This program is not meant to be a training program.



NIH CCH strategic framework priority areas

## Eligibility

- U.S. or international scientists from the academic, non-profit, or private institutions.
  - Federal employees and past CH Scholars not eligible.
- Ph.D. or M.D. or equivalent degree & mid-career to senior-career
- Candidates do not need to have an NIH funding record.
- This program is not open to students & is not a training or Post-Doc training program.
  - Post-Docs may be eligible **IF** there is a strong climate record and late in the post doc experience.
- Should have a strong publication record in climate science or climate and health sciences
  - If their publication record is in a climate and non-health-science field, there must be a clear explanation connecting it to a public health impact.

## Eligibility (continued)

- Demonstration of leadership in climate field/topics should be reflected in the application.
- Candidates should have experience and expertise in a climate and health related field OR climate and a non-health science field.
  - can include but is not limited to social/behavioral science, implementation science, climatology, hydrology, engineering, urban planning, climate sciences, physical sciences, climate and health sciences, basic science, clinical science, translational science, population science, etc.
- If your area of expertise is outside a typical health/biological field, you will need to detail how it connects to the NIH mission in the context of this program.

## Eligibility (continued)

- We welcome applicants from outside the U.S.
- Encourage applicants from Minority Serving Institutions, Community-Based organizations, HBCUs, and low- and middle-income countries (LMICs).
- NIH is looking for established researchers who have solid research experience in climate and/or health sciences to help NIH institutes, centers and offices expand their knowledge.
- NIH encourages applications from researchers with diverse backgrounds and experiences.





## Program Details

- Climate and Health (CH) Scholars will be hosted by an NIH host Institute, Center, or Office (ICO). Participation can be virtual, in-person or hybrid.
- The Scholars and their ambassadors will develop a customized workplan that meets the needs and goals of the hosting ICO.
- During their time at NIH, each scholar will be invited to collaborate with NIH staff across their host ICO on one or more of a diverse array of activities including research, tutoring, presentations, consultations, etc. to share their scientific knowledge and experience with NIH laboratories, program offices, and the wider NIH community.
- There will be opportunities for collaborations to develop between the scholar and NIH intramural and extramural staff.
- **This program is not meant to provide time and space for you to conduct your own research at NIH.**
- **You will not be able to participate in funding discussions or initiatives.**

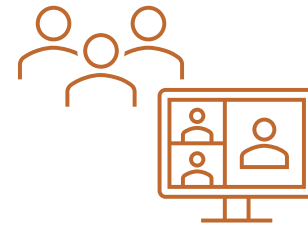


## 2024-25 Host Institutes, Centers, and Offices (ICOs)

- Fogarty International Center (FIC)
- National Center for Complementary and Integrative Health (NCCIH)
- National Cancer Institute (NCI)
- National Heart, Lung, and Blood Institute (NHLBI)
- National Institute on Aging (NIA)
- National Institute of Allergy and Infectious Diseases (NIAID)
- National Institute of Arthritis and Musculoskeletal and Skin Diseases (NIAMS)
- National Institute of Environmental Health Sciences (NIEHS)
- National Institute of Mental Health (NIMH)
- National Institute on Minority Health and Health Disparities (NIMHD)
- National Institute of Neurological Disorders and Stroke (NINDS)
- Office of Aids Research (OAR)
- Office of Behavioral and Social Sciences Research (OBSSR)
- Office of Disease Prevention (ODP)
- Office of Dietary Supplement (ODS)

*You can find the interest statements of these ICOs and what a Scholar could do with each at <https://www.nih.gov/sites/default/files/research-training/initiatives/climate-change/ico-interest-statement.pdf>*

## Past Examples of Activities for Climate and Health Scholars while at NIH



*This is not an exhaustive list,  
and there are opportunities to  
partake in activities beyond this list.*

### NIH Wide Activities

- Present their research to many audiences across NIH
- Meet with the NIH-wide Climate Change and Health Working Group
- Meet with CCH Initiative Executive Committee Directors & the leadership of interested ICs
- Engage with scientists in the Intramural Research Program and Extramural Research Programs across the NIH
- Attend regular calls with the entire CH Scholars Cohort to engage in scientific discussions and activities
- Present a public-facing scientific webinar as part of the NIH Climate Change and Health Seminar Series

### Host ICO Activities

- Plan an IC-wide conference on community-engaged research
- Develop a strategic guide for how to incorporate climate science research into a program's existing framework and goals
- Evaluate impacts of climate change on a specific disease and develop a white paper
- Bring state of the art methods and research findings to NIH program areas
- Consult with intramural and extramural investigators
- Engage in seminars and webinars to promote the link between climate change and the ICO mission



## Time Commitment



- The 2024-2025 Scholar position can be virtual, on-site, or a hybrid experience.
- The program is flexible to accommodate scholars' preferred schedule.
- Scholars will be expected to **dedicate up to 25%** of their time over a 10-month period and hours/schedule will be discussed during the interview process and agreed upon with the host ICO.



## Application Process: Documents required to apply



1. Cover  
Letter

2. Biosketch

3. Resumé

Submit your application  
package to  
[CHScholars@nih.gov](mailto:CHScholars@nih.gov) by  
**July 15th, 2024**

From your overall application it should be clear how your expertise will help build climate and health capacity and understanding at the ICO of your choice, as it relates to the ICO's mission.



## 1. Cover Letter

- **How your area(s) of expertise would help build climate and health capacity** and understanding at one or more of the participating NIH ICOs, as it relates to the ICO's mission.
  - If your area of expertise is outside a typical health/biological field (hydrology, urban planning, etc.), please detail how it connects to the mission of NIH and of a participating ICO(s).
- If you have a preference, please detail which participating ICOs you would be most interested in being placed with and why.
- A **vision statement** describing your research focus and what you would like to contribute to the NIH in the area of climate and health during your time as a CH Scholar, as well as an overview of your interest in being a CH Scholar.
- A proposed work schedule (timeline/hours)
- Your physical location preference (e.g., virtual, on-campus, hybrid, etc.)

## 2. Biosketch

- Your full name, position title, and affiliation.
- A summary of your **education/training** (institution, degree if applicable, completion date, and field of study) highlighting areas **relevant to the NIH Climate Change and Health strategic plan**.
- A completed list of **publications relevant to the field of climate and health OR related to climate and a non-health science area**.
- A list of **invited talks or presentations relevant to climate and/or health**.
- Your **contributions to the science of climate and/or health**.
- Any **financial research support** in particular **for climate and/or health projects**.



### 3. Resumé or Curriculum Vitae

- Educational and professional background and experiences.
- Awards and honors
- Special activities (journal editor, study section participation, etc.)
- Format of your choice





## Review Process

### Step 1- Initial Applications Due & Screening for Eligibility

- After **July 15<sup>th</sup> deadline**, NIH will begin to review applications
- Applications are reviewed for eligibility and relevance to Institutes, Centers, and Offices (ICOs)
- Top candidates will be selected to move to step 2

### Step 2- 'Match Making & Interviews'

- Interviews and discussions between eligible candidates and interested ICOs will take place
- Dive deeper into potential activities and scheduling
- **August & September 2024**

### Step 3 – Final Selection

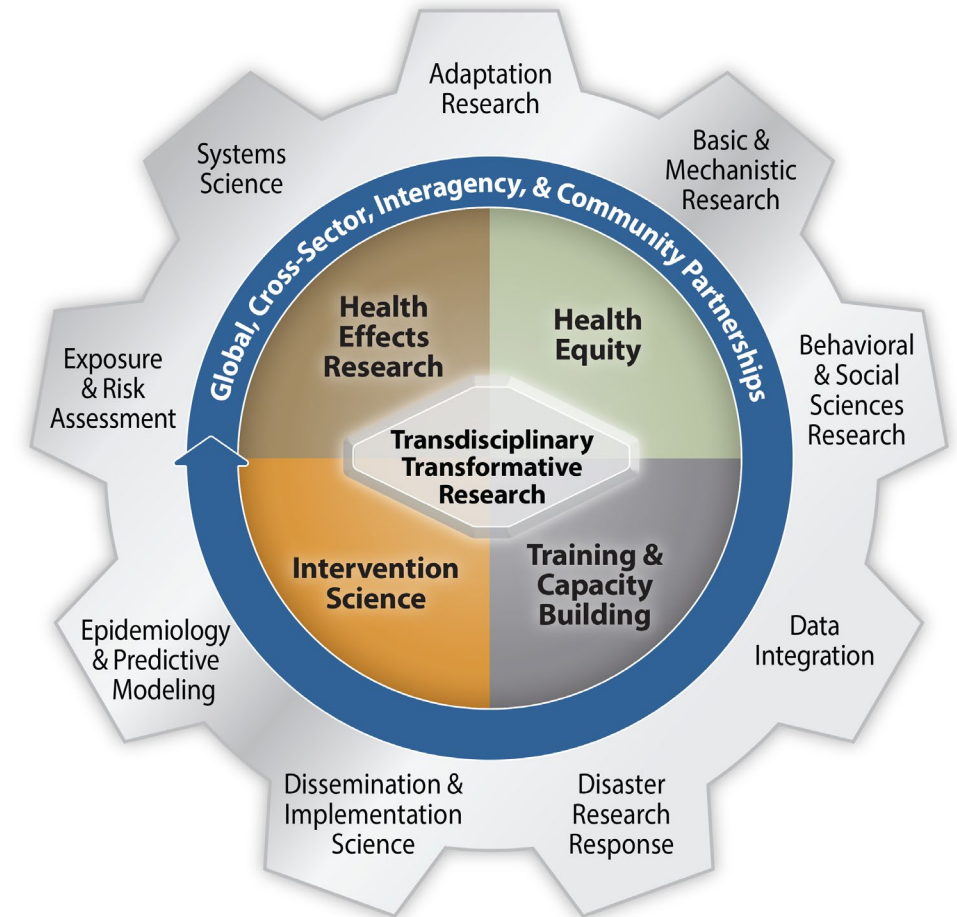
- Candidates will be selected and invited to participate in the program
- Agreements are distributed
- Start date will be **no sooner than mid-October 2024**





## Review Criteria

- Proven track record in climate and health.
- Alignment with the scientific areas outlined in the cog diagram.
- Relevance to ICO mission and climate and health interest statements.
- Potential to build capacity in key areas across the NIH.
  - “Facilitate the transfer of their knowledge and skills to NIH in order for NIH to conduct transdisciplinary climate and health science, develop innovative supporting technologies, and translate findings to facilitate understanding of, and adaptation to, the growing threat of climate change on health.”



## Frequently Asked Questions

- **Am I eligible?**
  - Ph.D. or M.D. or equivalent
  - U.S. or international scientists from the academic, non-profit, or private sectors
    - *U.S. Government Federal employees and previous Scholars not eligible.*
  - Previous applicants
  - Candidates do not need to have an NIH funding record.
  - This program is *not* open to students, and it is not a training program.

## Frequently Asked Questions (continued)

- **Which financial resources can I ask for?**
  - Scholars will be compensated for their time in the program; the funding amount will be discussed with those candidates that advance past the interview stage.
- **When will candidates be notified?**
  - Applicants that advance and those that do not advance will be notified of their application status.
  - Successful candidates will be invited into the program in September. The earliest start date for the 2024-25 Scholars program *could* be October 15<sup>th</sup>.

## Frequently Asked Questions (continued)

- **Can my Scholar workplan include activities in support of my federal grant?**
  - No, the goal of this program is not to extend your current work, but to work on projects to support a Host ICO's interests.
- **I have a grant application in review now: am I eligible to be a Scholar?**
  - Yes.
- **Am I still eligible to submit future grants if I am a Scholar?**
  - Yes.
- **Can I work on the development of Funding Announcements or policy statements with ICOs?**
  - No, you will not be able to participate in these discussions or write FOAs.

## FAQ asked Live on 7/1 Webinar

- **Are non-US Citizens eligible to apply?**
  - Yes.
- **Does an applicant have to be currently employed?**
  - No, the program is looking at expertise and experience.
- **Is there a suggested page length for the cover letter?**
  - There is not a hard requirement, we don't expect more than 4 pages.
- **What's the difference between the biosketch & CV?**
  - The biosketch should be tailored to your *climate and health* experiences whereas a CV would reflect all training and accomplishments regardless of topic.
- **How are reviewers selected & if I note an institute, center, or office (ICO) with relevant work in my cover letter will I *only* interview with that ICO?**
  - Reviewers are NIH staff from ICOs with an interest statement posted for the FY25 Scholars program. All of those ICOs have access to all applications and many candidates will meet with multiple ICOs.
- **I have a unique situation, expertise area, etc. Am I eligible?**
  - Please email [CHScholars@nih.gov](mailto:CHScholars@nih.gov) for a specific response OR explain in your cover letter the expertise you bring.

Please ask your questions in the Q&A box

### Q&A ✕

**All questions (1)** My questions (1)

**Jack Barker** 2:34:08 PM

When is the next webinar?

Comment 👍



National Institutes of Health

Athawit Ketsak / Shutterstock.com

# Thanks for your participation

Please send your questions to

[CHScholars@nih.gov](mailto:CHScholars@nih.gov)

For more info on the CH Scholars Program and past scholars, visit:

<https://www.nih.gov/climateandhealth#scholars>

## Other Climate Change and Health Activities and Funding Opportunities at NIH

- **NIH Climate Change and Health Seminar Series**
  - NIH Institutes and Centers (IC) have joined forces to educate and inform colleagues and the public about the human health implications of climate change. This series will present webinars from different ICs highlighting work in the field of climate change while promoting transdisciplinary discussion and collaboration in this concerted effort against an extreme threat to health.
  - <https://www.nih.gov/climateandhealth>
- **Notice of Special Interest (NOSI): Climate Change and Health**
  - NOT-ES-22-006 | Expiration Date: May 08, 2025
  - As part of the NIH-wide Climate Change and Health Initiative, this NOSI encourages applications that address the impact of climate change on health and well-being over the life course, including the health implications of climate change in the United States and globally.
- **Notice of Special Interest (NOSI): Promoting Data Reuse for Health Research**
  - NOT-OD-24-096 | Expiration Date; November 04, 2026
  - Climate Change and health researchers interested in integrating climate and health data may be interested in this NOSI.
- **Other NIH Climate and Health Funding Opportunities**
  - <https://www.nih.gov/climate-change-health/additional-nih-funding-related-climate-health>